

Sári Ember
Em casa

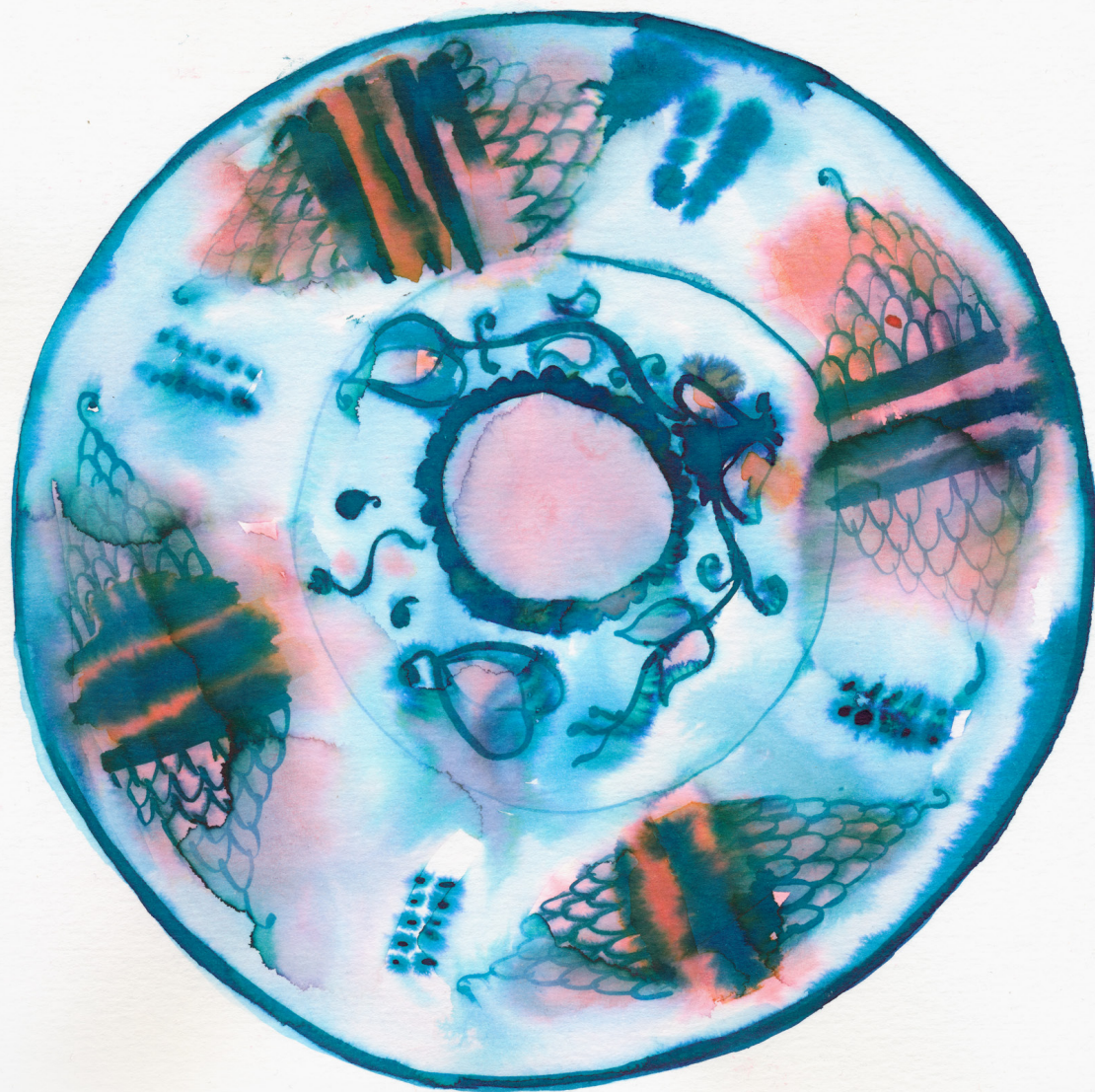
When coming to São Paulo two years ago, Alinka, having a spare room, offered to host me. My parents became friends with her in Brasil when they worked here in 1983-85. She is Hungarian and escaped from the communist dictatorship after revolution in 1956.

The house is on the inner edge of the periphery, with a little lush garden. For Brazilians it appears to be very European, to me it seems to be quite Brazilian too. It is not too big, not too small, has everything what you would need in a modest way and small scale.

I never had the opportunity to observe a house from inside, which is not my natural home, for such a long time. I became part of it, some things change with me naturally, I take part in the system and 'rules' of the house, which are mostly defined by Alinka, and also a little by the others who live or have lived there. I am observing the system, the order and disorder of the house, its changes, habits, objects. It has its own measure of time, circles defined by the people, weather, fruits ripening, objects falling apart and being fixed in it. I portray the objects of the house, some having their place, some moving constantly. They mostly have emotional value, remembered or forgotten, but probably will have little meaning to the next generation.

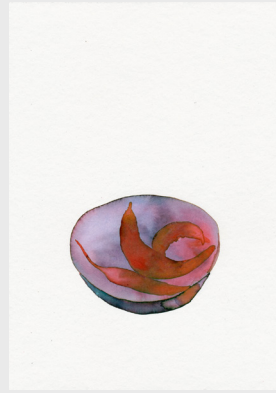
I realize and admire that every single home is such a unique unit which can be defined through its objects - and still sharing every single element with many other homes.

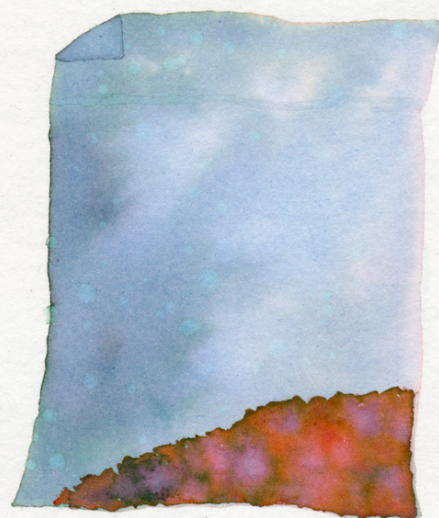
*ink drawings on canson paper. Varied sizes: 15x21, 21x29, 30x40 cm,
work in progress*



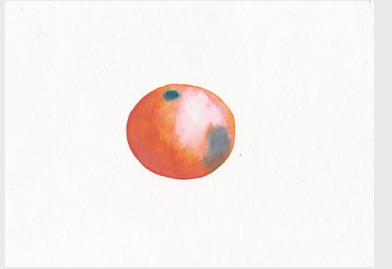
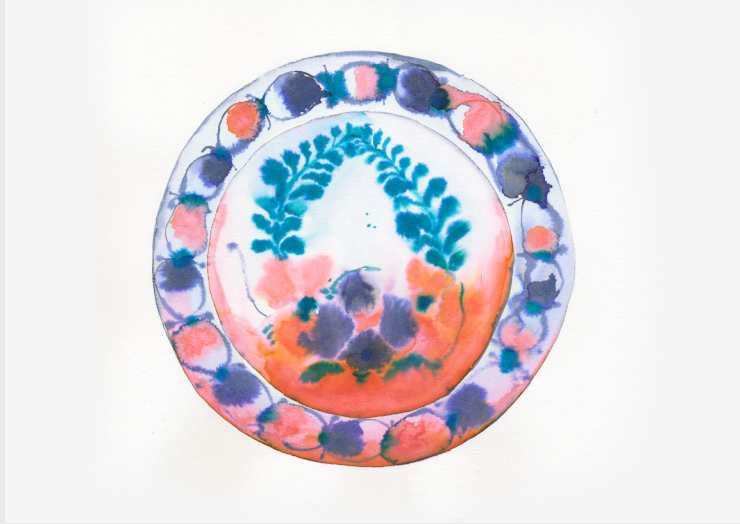


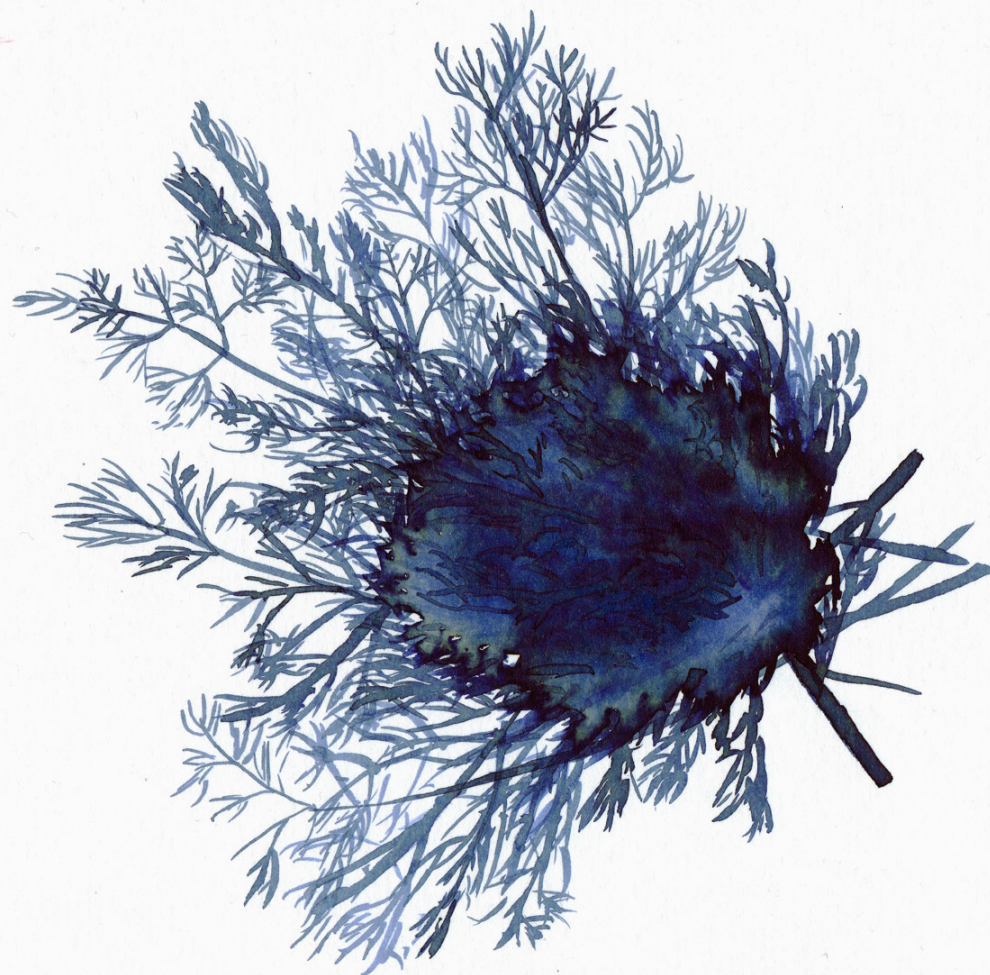




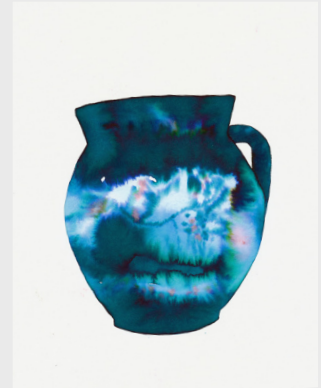




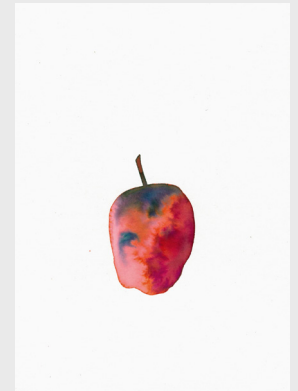
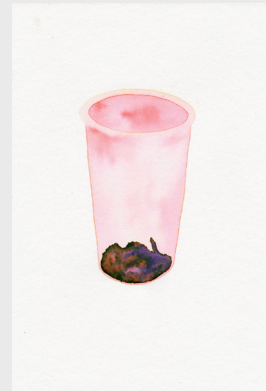
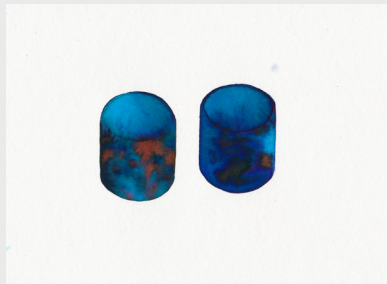


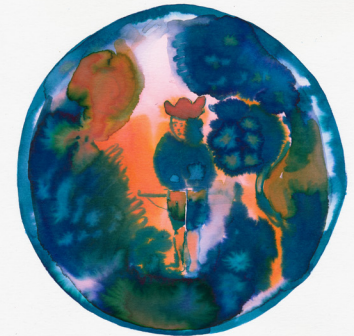




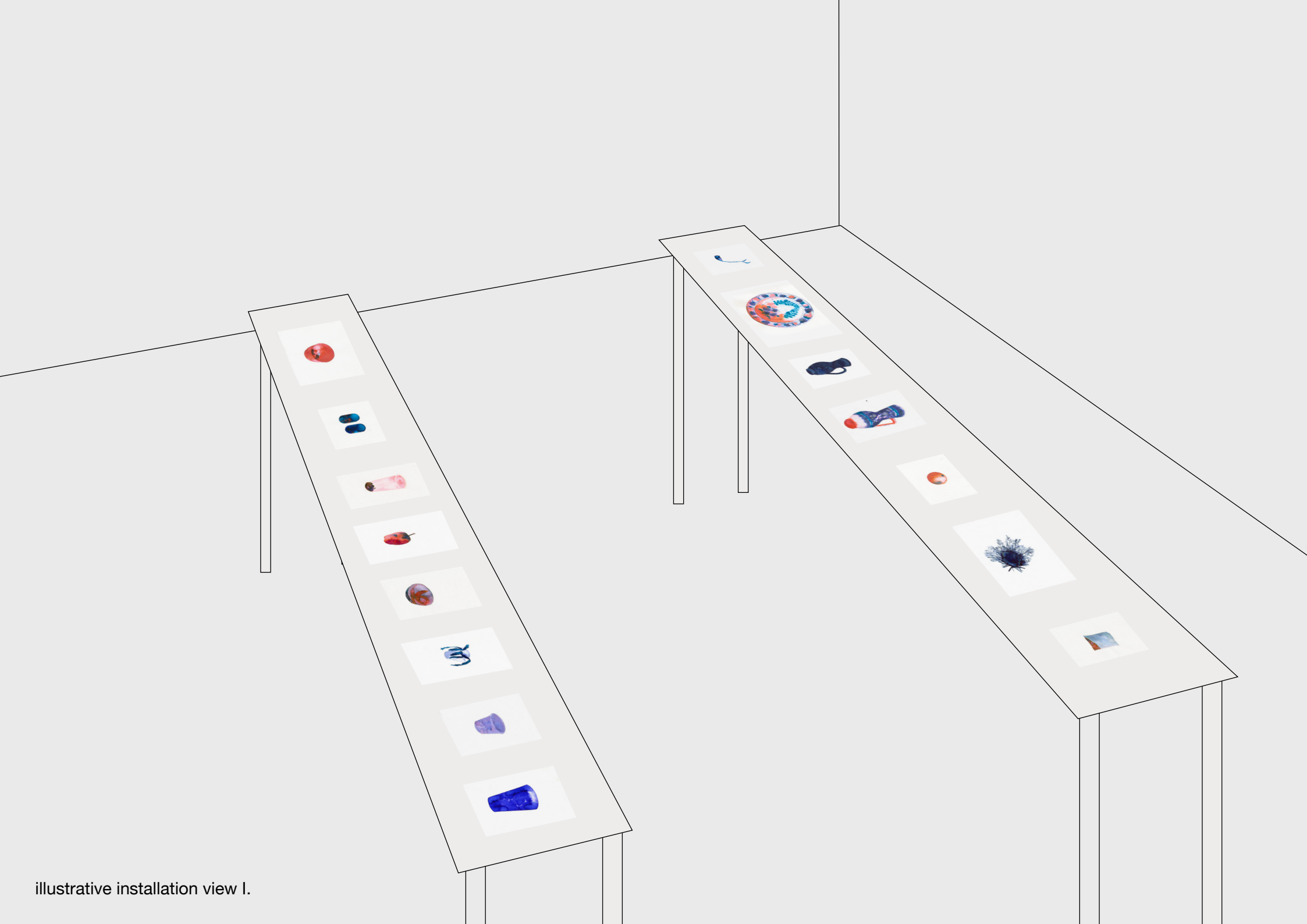












illustrative installation view I.



illustrative installation view II.

2015

www.embersari.com